

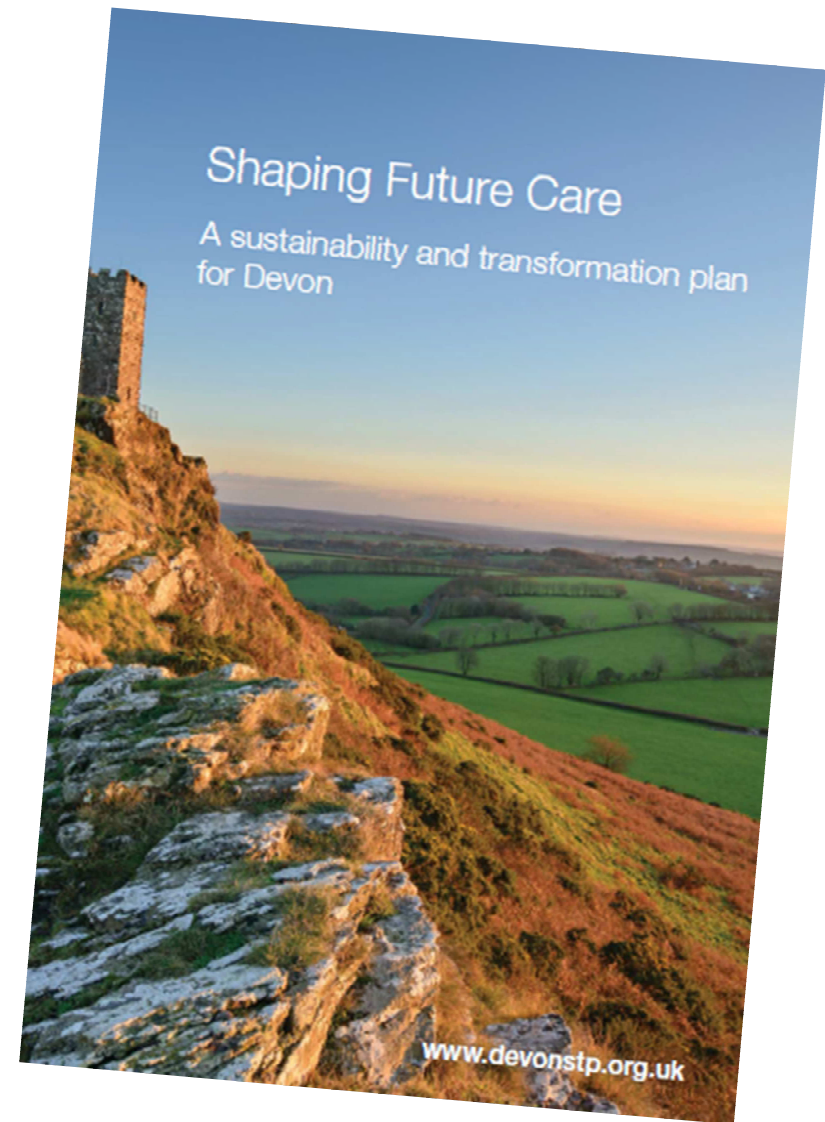
# Shaping Future Care

## A Sustainability and Transformation Plan (STP) for Devon



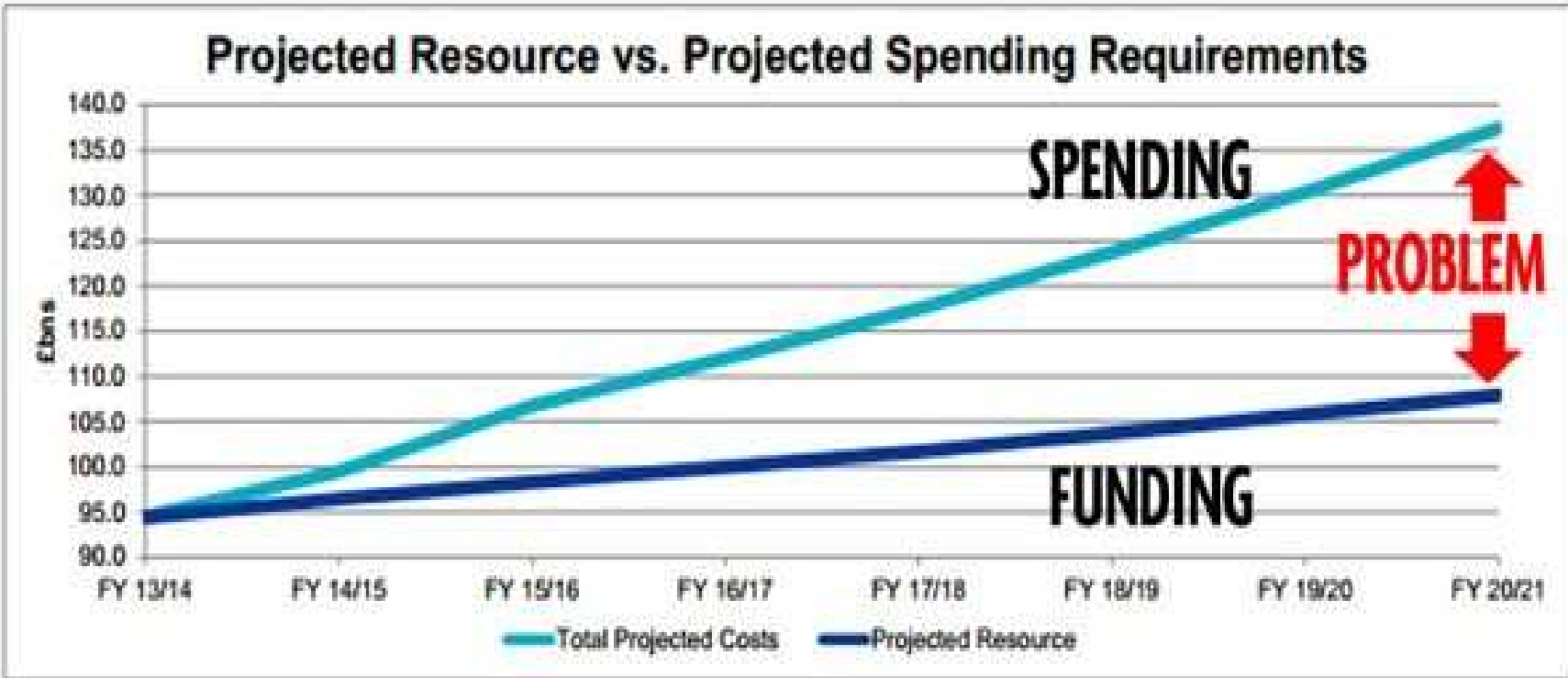
## Context

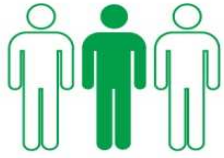
- ❑ We are all proud of the NHS
- ❑ However, the service is facing a number of significant challenges
- ❑ Therefore, we have to change to ensure we are fit for the future
- ❑ Devon has developed a Sustainability and Transformation Plan (STP)
- ❑ Ours is one of 44 plans in England



# HEALTH FUNDING VS HEALTH SPENDING IN THE NEXT 10 YEARS

The funding gap is projected to be around £30bn by 2020/21.





**1 in 3 people live with one or more long-term conditions.** Health and social care services must better support their needs

---

**2 in 3 people** would prefer to **die at home** but only **1 in 4** are able to do so



There is a **15 years' difference in life expectancy** between some areas

---

We face a **deficit of more than £550m by 2020/21**, if nothing changes



Difficulties in recruiting and retaining staff make it hard to provide comprehensive and high-quality services. **1 in 4 GPs plan to leave the NHS in the next five years**





**600 people in hospital beds don't need to be there.** This can cause health to decline

---

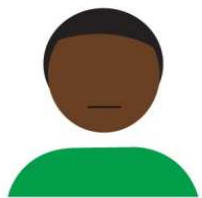
**Care home sector is struggling** to meet increasing demand and **complexity** of need



**Stroke, maternity, A&E and children's services are unsustainable** without changes

---

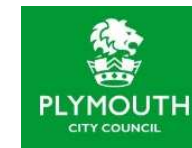
**Less money is spent** on health and social care in the **most deprived areas**



**Over 95,000 people with a long-term condition have a mental illness.** We spend a great deal of money on their care, but they often achieve poor outcomes. They deserve better

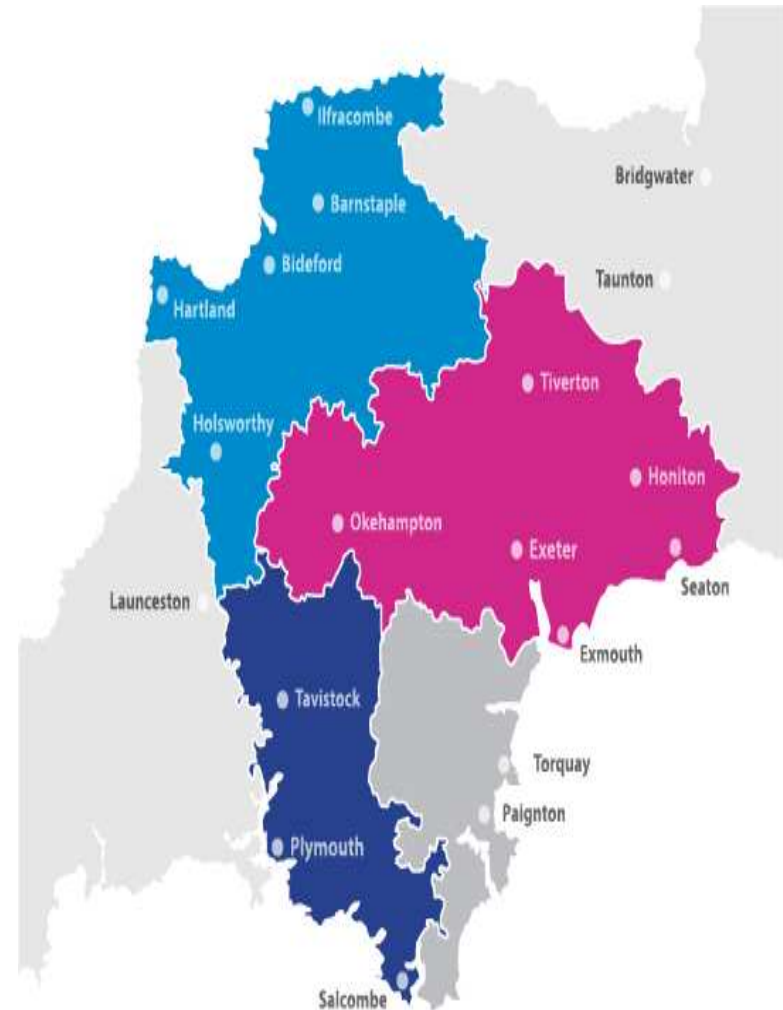


# All organisations in Devon are signed up to the **STP**...



## What the STP will do...

- ❑ It will test current thinking
- ❑ It will help us shape how health and care services need to change to meet the future
- ❑ The STP has a clear vision, and three areas of focus
- ❑ Work taken forward in seven priority areas



# Aims of the STP

We will focus everything we do on:



Improving **health**  
and **wellbeing**



Delivering **safe** and  
**high-quality care**



Providing  
**cost-effective care**

## Health and wellbeing

Needs of ageing and growing population

Rising demands on the care system

Health inequalities across Devon

## Care quality

Variability of quality in different areas

Mental health as important as physical health

The best bed is your own bed

## Financial sustainability

'Do nothing' means a £557 million gap by 2020/21

Huge impact across our services

Fair resource allocation

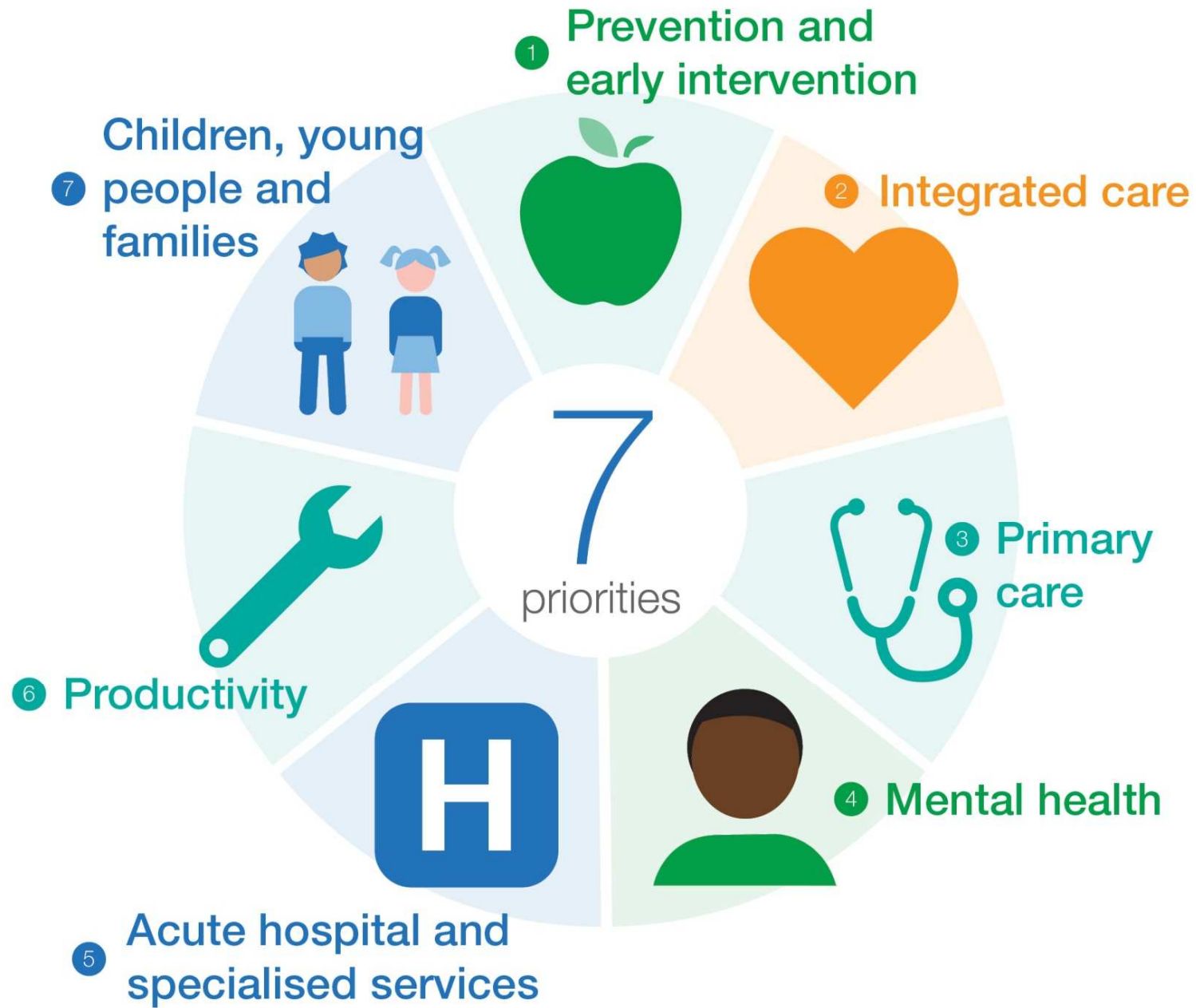




# Financial stability: STP addresses need for Devon to live within its means

- ❑ Devon 2017/18 opening deficit position against control total is £229 million – 15% of turnover
- ❑ Our STP plan, submitted in Dec 2016, moves Devon system to financial balance over a 3 year period:
  - Year 1 (2017/18): Planned deficit of **£78 million**
  - Year 2 (2018/19): Planned deficit of **£36 million**
  - Year 3 (2019/20): **Breakeven**
- ❑ We have been asked to accelerate these plans
- ❑ Delivery requires large scale service redesign and change





# Strong progress in working as a system

- ❑ First year as STP has seen great progress and achievement
- ❑ System working has led to:
  - Real progress in tackling the money, with in-year savings of £66 million. Year-end system deficit was £80 million
  - Improvements to service performance, notably urgent referrals for cancer treatment within two-weeks, psychological therapies for mental health, and improvements to A&E despite huge pressures
  - Reduction in elective activity, with routine referrals down by 3.4%
  - Two major public consultations on new models of care
- ❑ More change to come, such as focus on accountable care systems and working in more integrated ways
- ❑ Further challenges on ensuring Devon lives within its means



## Strong progress in working locally; Plymouth and Western

- ❑ Leadership team of Taking Change Forward – linking STP and its application for our local system, including the four integrated commissioning strategies
- ❑ Plymouth and Western delivery Board – focusing on development and delivery for the wider footprint
- ❑ Integrated health and wellbeing commissioning budget
- ❑ Livewell Southwest – an integrated community, mental health and social care provider
- ❑ Commitment to an integrated urgent care system through the local A&E Improvement Board
- ❑ Plymouth Hospitals NHS Trust – Peninsula provider of specialist services and committed to the health and well being priorities of staff and local population
- ❑ Livewell and PHNT working together with Primary care
- ❑ Commitment to our local communities and improving Health and Well Being

